

# CAIMAN

PANTANAL . BRASIL



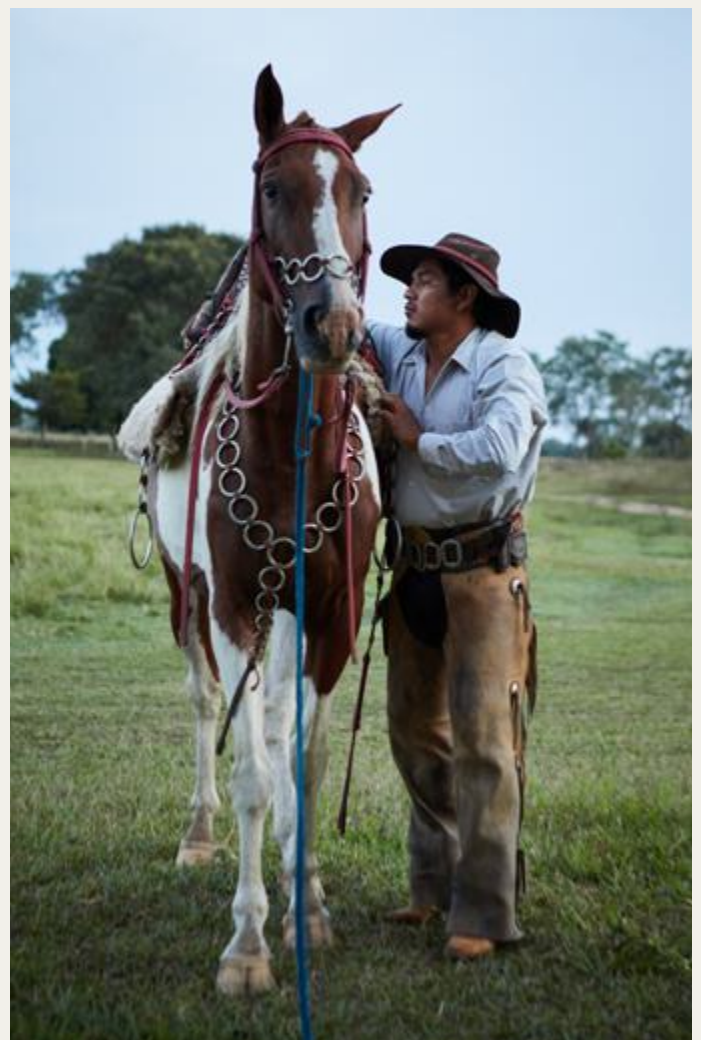


## CAIMAN, PANTANAL

---

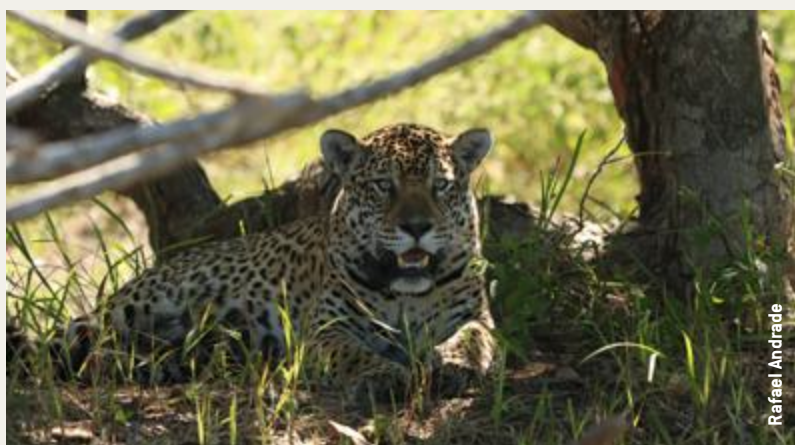
Created by an environmentalist over 40 years ago, Caiman is a **53,000-hectare oasis**, whose mission is to **conserve the fauna, the flora, and the culture of the Pantanal**. As part of our commitment to preserve the biome, 15,000 hectares were turned into a **natural reserve**.

Our ecological refuge is a **real sanctuary dedicated to biodiversity**, it also serves as a base for several **conservation initiatives**, such as Onçafari and the Hyacinth Macaw Institute, which find here the ideal site for their studies and research.





Keith Ladzinski



Rafael Andrade



Keith Ladzinski

## FAUNA

During an experience at Caiman, it is possible to see **more than 500 animal species**, many of which are rare, including **350 species of birds**, as they find in our refuge a **safe home to live freely**. Jaguars, giant anteaters, tapirs, capybaras, ocelots, hyacinth macaws, and jabiru storks are some of the beauties found here.

## LOCATION

Our lodge is located in Mato Grosso do Sul state, within 236km (147 miles) from Campo Grande airport, and 182km (113 miles) from Bonito airport. From both of these airports, there are two ways to get to Caiman:

### BY CAR

It takes approximately 3.5 hours by car from Campo Grande and 2.5 hours from Bonito. We do not offer a transfer service, but we can suggest a local supplier.

### BY PLANE

Caiman has a private, 1400-metre-long grass landing strip, well suited for single and twin engine private planes. It takes approximately one hour from Campo Grande airport to Caiman. Please let us know if you would like more information.





## ACCOMMODATION

---

Between one tour and another, we offer **all the facilities** necessary and utmost convenience so that guests can enjoy some time **to relax and to contemplate** nature. The atmosphere is cozy, and **the scenery is gorgeous** – immersed in greenery and **overlooking a bay**.





## CASA CAIMAN

---

Our main lodge features **18 suites with porches**, a pleasant pool, a **deck overlooking the bay**, living rooms, a fireplace, a hammock area, a restaurant, a sauna, and a gym. We also have a shop offering an excellent selection of **regional handicrafts**, as well as notable items from other parts of Brazil.



## CASA CAIMAN

### SUITES

Our distinct air-conditioned 45m<sup>2</sup>/484sq ft suites are a great place to relax between tours. They feature a king-size bed or two single beds, a full bath, and a porch from which you can hear the singing of the birds. The cozy decor includes decor items that remind the Pantanal fauna.



### SUPERIOR SUITES

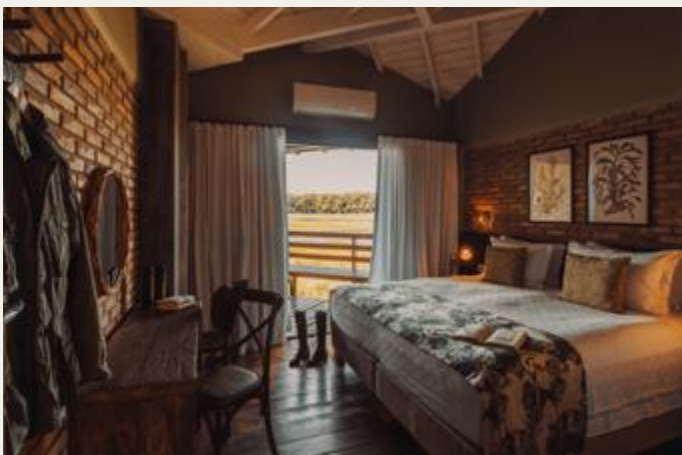
Our superior suites, approximately 52 m<sup>2</sup>/560sq ft, are bright large bedrooms with a porch, designed to offer coziness. They include air conditioning, a coffee maker, and a minibar. In this category, in addition to a 1 king-size bed or 2 single beds, a third bed can be requested to accommodate a child aged 8 to 12, subject to a rate difference.



### MASTER SUITES

An 80 m<sup>2</sup> area to ensure your days in the Pantanal are as comfortable as possible. The air-conditioned room accommodates up to two people in a king-size bed or two single beds, and offers a walk-in closet and a full bathroom. A special mention to the living room: it features a toilet, a porch with a view of the bay, a tv, a minibar and a coffee maker; everything so that guests can enjoy moments of total privacy.





## VILLA BIAZINHA (PRIVATE VILLA)

Our **Villa Baiazinha** features **six bedrooms** with air-conditioning, and a porch with a hammock. It can only be booked in its entirety, ideal for **families or groups looking for even more privacy** without missing the comfort of our hotel service. The full program of tours is offered with an exclusive car and a field guide, which allows **greater flexibility in the schedules** and may include children of any age.

Villa Baiazinha is located in a **privileged setting** facing a scenic bay, with a **charming and welcoming decor**. It has a pleasant **swimming pool overlooking the greenery**. The dining and living rooms feature large glass windows, perfect for **contemplating the fauna and flora at all times**.





## GASTRONOMY

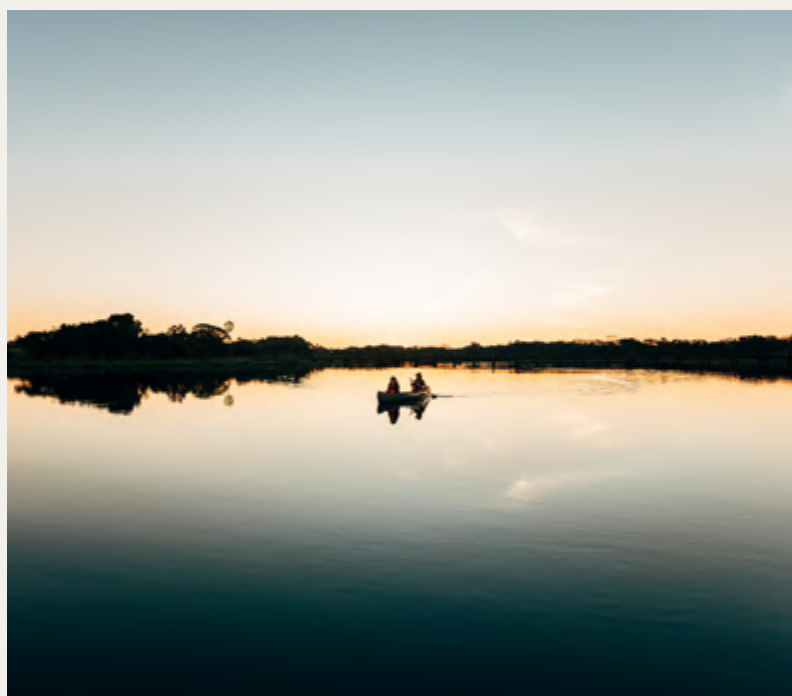
Meals at Caiman are inspired by **Brazilian homemade cooking** and feature **typical recipes** from the country's different regions, including **classics from the Pantanal** cuisine – in addition to international cuisine options.

Our rates include full-board (breakfast, lunch, dinner, and snacks during the tours). Water and fresh fruit juices are complimentary during the meals.





Edu Fragoso



## EXPERIENCES IN NATURE

Our tours, included in the daily rates, are led by **bilingual guides** (English and Portuguese), most of whom are biologists, along with local field guides who have a **deep knowledge of the region**. What they all share is a **passion for the Pantanal**.

There are two daily departures, which take place at the best times to spot the region's wildlife: dawn and dusk.

## EXPERIENCES INCLUDED IN DAILY RATES

---

### SAFARI

Taken in 4x4 open vehicles, this tour reveals different landscapes in search of **Pantanal wildlife**. Be prepared for **big surprises** along the way!

### NOCTURNAL SPOTLIGHT

Accompanied by the **silence of the forest**, this experience invites you to discover the **nocturnal habits** of animals such as the ocelot, giant anteater, jaguar and caiman yacaré – revealed by the impressive red reflection of their eyes.

### CANADIAN CANOE TOUR

**Paddle leisurely** through our bay and enjoy the beautiful, colourful sunset and **unforgettable scenery**.

### HIKING TRAILS

The trails are a unique opportunity to **immerse yourself** in the forest, illustrating many **interesting facts and tales** about the **abundant Pantanal flora**.



## ADDITIONAL EXPERIENCES\*

---

### HORSEBACK RIDING

This is the most memorable way to experience the Pantanal. Lasting about 3½ hours, the activity explores different landscapes with some surprises along the way.

R\$ 350 per person

### BIRDWATCHING

Our reserve is a paradise for bird lovers. Accompanied by expert guides, the tour highlights the rich biodiversity at Caiman, where more than 350 species of birds have already been registered, many of them rare.

R\$ 1.100 per person

**\* MINIMUM OF TWO PEOPLE PER TOUR**

**\* SUBJECT TO AVAILABILITY**

**\* BOOKING IN ADVANCE IS RECOMMENDED**



## EXPERIENCES CARRIED OUT BY CONSERVATION INITIATIVES

Conservation organizations are independent, self-funded initiatives based here at Caiman as a result of the **safe habitat** we have maintained in our refuge **for the last three decades**. These organizations can make use of our 53,000-hectares as a **real laboratory for research and studies** of some of the species and their surroundings.

Some organizations based on the farm allow guests to **experience the field** along with their **guides and biologists**. The proceeds from these activities go directly to the initiatives.





## EXPERIENCES CARRIED OUT BY CONSERVATION INITIATIVES

### ONÇAFARI

For **jaguar enthusiasts**, the tour is an invitation to really immerse yourself into the species. Biologists from **Onçafari**, an initiative that **supports the conservation of the mammal**, reveal **interesting facts and data**, both scientific and behavioral about jaguars in general, and about the **individuals they monitor in our ecological refuge**. To participate, make a donation directly to the project and book in advance.

### HYACINTH MACAW INSTITUTE

How about a **birdwatching experience** focused on **hyacinth macaws**, the bird that colors the skies of the Pantanal? The **Hyacinth Macaw Institute**, a pioneering initiative that has been **studying the species for over 30 years**, offers a tour along with their biologists where guests can watch the macaws' behavior, learn fun facts about them, and **observe their nests spread throughout our refuge**. Thanks to this initiative, the hyacinth macaw's **conservation status** went from endangered to vulnerable. To participate, you must book in advance and donate directly to The **Hyacinth Macaw Institute**.

\* DONATION VALUES AVAILABLE UPON REQUEST  
WE RECOMMEND BOOKING IN ADVANCE



## SUSTAINABILITY, A COMMITMENT

---

By transforming his family farm into an **ecological refuge**, our founder hoped to share with the world **the importance of the Pantanal**, and the purpose for its conservation drives all our actions. For many years, in addition to a **legal reserve**, our 53,000-hectares property include a **private reserve**, the RPPN (Private Natural Heritage Reserve) Dona Aracy, with **different types of protected habitats**, it was intentionally created to ensure the **continuous preservation of the biome**, as the RPPN status is permanent.

Today, our RPPN is part of a larger project called **IMARK** (Instituto Maria Ângela and Roberto Klabin). With roughly **18,000-hectares**, this area comprises the **most preserved area of the farm** where conservation-related activities will take place, including **rewilding projects**, research, and **studies**. Last but not least, it creates a real **ecological corridor** along with other properties that also support the **preservation of the biome**.





# 4C

CONSERVATION CULTURE  
COMMUNITY COMMERCE

## SUSTAINABILITY

As a member of **The Long Run**, a global organization that brings together **nature-based tourism businesses** committed to the planet, we balance out four main areas: **conservation, culture, commerce, and community.**

Here are the highlights of each:



SINCE 2009



SINCE MAY 2011



## CONSERVATION

Creation of a **preserved area**, a RPPN, which guarantees its biodiversity and the permanent **conservation of the biome**

**Headquarters for initiatives** that support the conservation and the expertise of the biome of the Pantanal

## COMMUNITY

Opportunities for employment, qualification, and **income generation in different areas**, especially for local women

Activities, cultural events, and **training programs** which ensure **quality of life**, health, and education for employees and their families

## CULTURE

Preservation of **cultural heritage** through activities and cultural events for the community

**Broadening Pantanal culture** and values through experiences offered to guests

## COMMERCE

Pantanal **wildlife tourism** since 1985

Livestock activity making reference to the **history of Caiman and the Pantanal**



CAIMAN.COM.BR  
CAIMAN@CAIMAN.COM.BR

# CAIMAN

PANTANAL . BRASIL